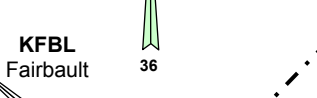
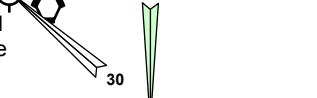
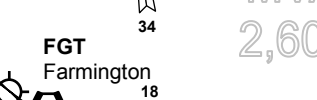
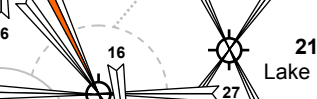
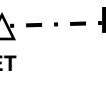
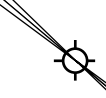
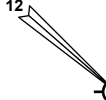
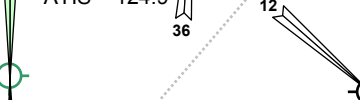
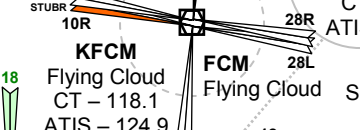
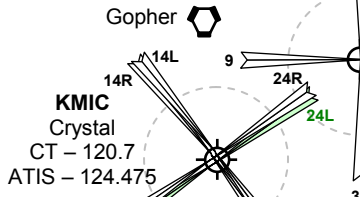


MVA
2,800



- 132.4 ANOKA TOWER
(0700-2100) OCT-APR
(0700-2200) MAY-SEP
- 120.7 CRYSTAL TOWER
(0700-2100) OCT-APR
(0700-2200) MAY-SEP
- 118.1 FLYING CLOUD TOWER
(0700-2200) APR-OCT
(0700-2100) NOV-MAR
- 119.1 ST. PAUL TOWER
(0600-2200) MON-FRI
(0700-2200) SAT-SUN

- MINNEAPOLIS APPROACH
- 126.35 (F) North Feeder
- 119.3 (N) North Final
- 135.47* (H) South Feeder
- 126.95 (S) South Final
- 118.725 (W) West Final
- 121.2 (G) Saint Paul
- 126.5 (K) Crystal
- 134.7 (U) Flying Cloud
- MINNEAPOLIS DEPARTURE
- 125.75 (D) North
- 124.7* (R) South
- 132.975 (P) Auxiliary

MVA
2,600

TRGET

NOT FOR NAVIGATION

MINNEAPOLIS, MN MINNEAPOLIS TERMINAL RADAR APPROACH CONTROL SATELLITES			
PREPARED BY 812647 DEPARTMENT OF FACILITY ENGINEERING VATSIM MINNEAPOLIS AIR ROUTE TRAFFIC CONTROL CENTER	MAP NUMBER M98-1061LS	SENSOR IDENT MSP	MAP DATE 02-11-2010