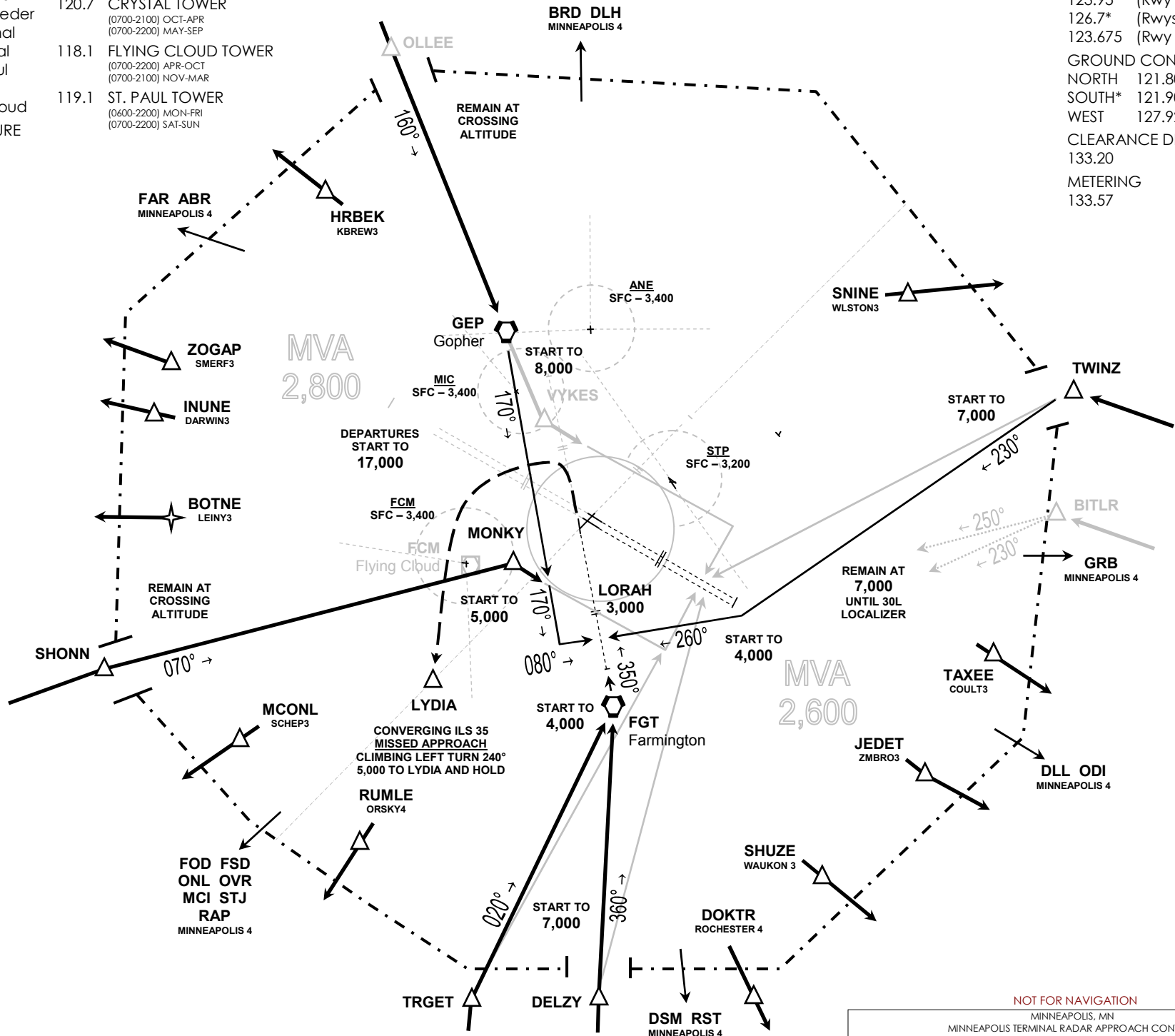


- MINNEAPOLIS APPROACH
- 126.35 (F) North Feeder
 - 119.3 (N) North Final
 - 135.47* (H) South Feeder
 - 126.95 (S) South Final
 - 118.725 (W) West Final
 - 121.2 (G) Saint Paul
 - 126.5 (K) Crystal
 - 134.7 (U) Flying Cloud
- MINNEAPOLIS DEPARTURE
- 125.75 (D) North
 - 124.7* (R) South
 - 132.975 (P) Auxiliary

- 132.4 ANOKA TOWER
(0700-2100) OCT-APR
(0700-2200) MAY-SEP
- 120.7 CRYSTAL TOWER
(0700-2100) OCT-APR
(0700-2100) MAY-SEP
- 118.1 FLYING CLOUD TOWER
(0700-2200) APR-OCT
(0700-2100) NOV-MAR
- 119.1 ST. PAUL TOWER
(0600-2200) MON-FRI
(0700-2200) SAT-SUN

- ATIS 135.35
- MINNEAPOLIS TOWER
- 123.95 (Rwy 12L-30R)
- 126.7* (Rwys 12R-30L, 4-22)
- 123.675 (Rwy 17-35)
- GROUND CONTROL
- NORTH 121.80
- SOUTH* 121.90
- WEST 127.925
- CLEARANCE DELIVERY 133.20
- METERING 133.57



NOT FOR NAVIGATION

MINNEAPOLIS, MN
MINNEAPOLIS TERMINAL RADAR APPROACH CONTROL
WEST RWY 35

PREPARED BY 812647 DEPARTMENT OF FACILITY ENGINEERING VATSIM MINNEAPOLIS AIR ROUTE TRAFFIC CONTROL CENTER	MAP NUMBER M98-1051LS	SENSOR IDENT MSP	MAP DATE 02-11-2010
---	--------------------------	---------------------	------------------------